

# DAILY TECHNICAL, 14 FEBRUARI 2020

**PT PROFINDO SEKURITAS INDONESIA**

**GD PERMATA KUNINGAN LT 19  
JL KUNINGAN MULIA KAV 9C GUNTUR SETIABUDI JAKARTA SELATAN 12980**

**TELP +62 21 8378 0888**

**EMAIL : CUSTOMERSERVICE@PROFINDO.COM**

**WWW.PROFINDO.COM | PROCLICK.PROFINDO.COM**

# JAKARTA COMPOSITE INDEX



## PREVIOUS 13 FEBRUARI 2020

CLOSING	5871.954	-0.696%
TRANSACTION	IDR 6.77 TRILLION	
FOREIGN NETT	IDR 48.5 BIO (BUY)	

## PREDICTION 14 FEBRUARI 2020

**BEARISH**  
**RANGE 5776-5927**

**DOWNTREND**  
**STOCHASTIC : DOWNTREND**  
**MACD : HISTOGRAM NEGATIF DAN DOWNTREND**

# TECHNICAL RECOMENDATION



## ADRO – PT ADARO ENERGY TBK

CLOSING 13/2/2020 RP 1350 (+1.5%)

**BUY**

**TARGET PRICE 1420**

**STOPLOSS < 1320**

BREAK OUT TRIANGLE

STOCHASTIC : UPTREND

MACD : HISTOGRAM POSITIF DAN UPTREND

# TECHNICAL RECOMENDATION



## KINO – PT KINO INDONESIA TBK

CLOSING 13/2/2020 RP3030 (+1%)

**BUY**

**TARGET PRICE 3160**

**STOPLOSS < 3000**

THREE WHITE SOLDIERS

STOCHASTIC : UPTREND

MACD : HISTOGRAM POSITIF DAN UPTREND

# TECHNICAL RECOMENDATION



**ACES – PT ACE HARDWARE INDONESIA TBK**

**CLOSING 13/2/2020 RP 1610 (+1.6%)**

**BUY**

**TARGET PRICE 1680**

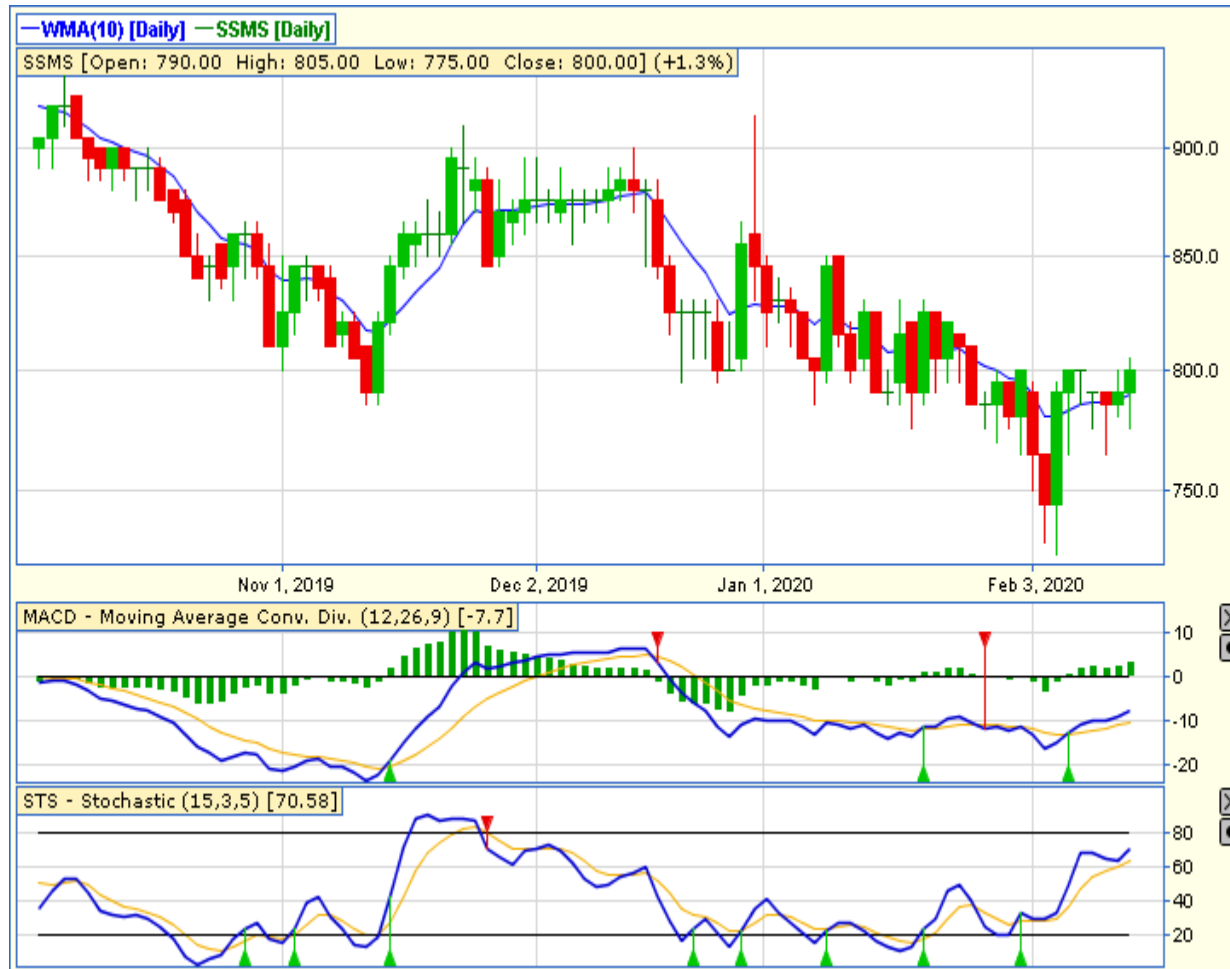
**STOPLOSS < 1585**

**MORNING STAR**

**STOCHASTIC : OVERSOLD**

**MACD : HISTOGRAM NEGATIF MENGECIL DAN BERSIAP GOLDEN CROSS**

# TECHNICAL RECOMENDATION



**SSMS – PT SAWIT SUMBERMAS SARANA TBK**

CLOSING 13/2/2020 Rp 800 (+1.3%)

**SELL ON STRENGTH  
TAKE PROFIT 830**

BREAK OUT TRIANGLE  
STOCHASTIC : UPTREND  
MACD : HISTOGRAM POSITIF DAN UPTREND

# TECHNICAL RECOMENDATION



**IMAS – PT INDOMOBIL SUKSES INTERNASIONAL  
TBK**

**CLOSING 13/2/2020 RP 865 (+4.8%)**

**BUY  
TARGET PRICE 935  
STOPLOSS < 850**

**HAMMER  
STOCHASTIC : OVERSOLD  
MACD : HISTOGRAM NEGATIF MENGECIL DAN  
LOWER AREA**

# TECHNICAL RECOMENDATION



**BBNI – PT BANK NEGARA INDONESIA (PERSERO)  
TBK**

**CLOSING 13/2/2020 RP 7400 (+1.7%)**

**SELL ON STRENGTH  
TAKE PROFIT 7525**

**BULLISH ENGULFING  
STOCHASTIC : UPTREND  
MACD : HISTOGRAM POSITIF DAN UPTREND**



# RESEARCH TEAM



**YULIANA**

**RESEARCH ANALYST &  
CORPORATE FINANCE**



**DIMAS WP PRATAMA, CSA**

**TECHNICAL ANALYST**

# EQUITY CAPITAL MARKET TEAM



**JESSIE JAMES**

**HEAD OF EQUITY SALES**



**PRASETYO NUGROHO**

**HEAD OF DEALING ROOM**



**GABRIELLA PRATIWY**

**HEAD OF ONLINE TRADING**